

vcpnTM

vision care product news



LENSES:
ZEISS launches
photochromic
PHOTOFUSION

E-TECH:
Realize profit
potential with
SANTINELLI'S
REAL-EYEZ

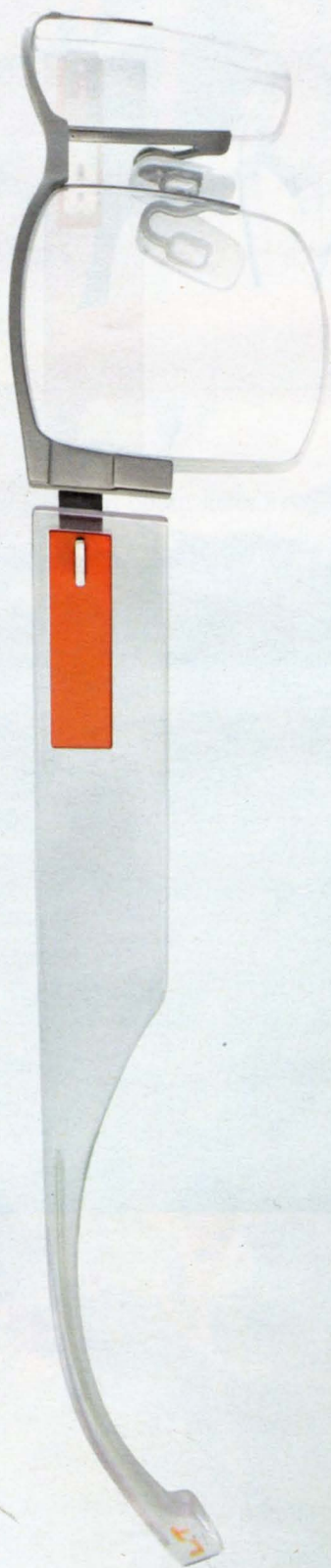
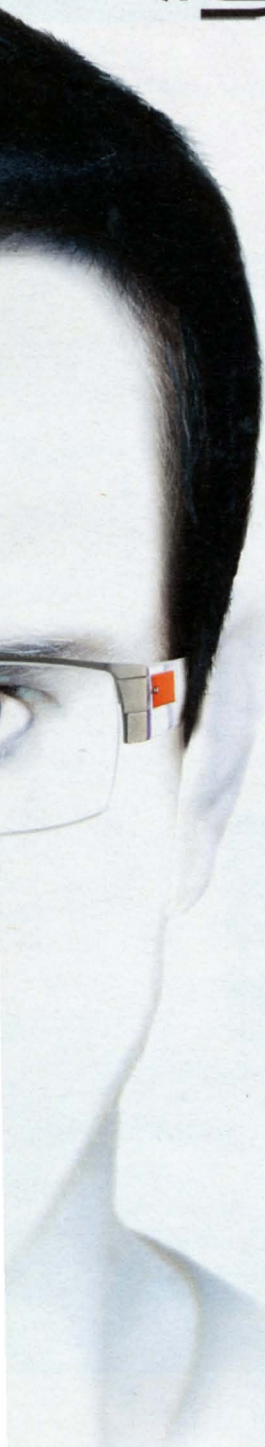
JUST RELEASED:
**KENMARK'S
ORIGINAL PENGUIN
MAKES A SPLASH**

EIKO SPORTSWEAR
color enhanced vision
Transitions[®] SOLEX



For Everything
You Do Outdoor

Lighttec



MOREL

www.morel-france.com

Toll Free: 1.800.526.8838

eyewear & sunwear new product gallery

QUIRK IS IN FOR CLASSIQUE'S SUPERFLEX KIDS. With eight styles in a range of eyeshapes and colors, the Superflex Kids collection from Classique has its eye on fit and durability, with a splash of playful personality. Each spring-hinged frame comes in two sizes, and models are available in stainless steel and acetate (Style Nos. SFK-76, for girls, and SFK-74, for boys, shown here). **For more information, contact Classique Eyewear at 866-604-5700 or classique-eyewear.com.** ▼



ALLISON IS ON THE TEEN SCENE WITH MOSCHINO. Featuring five ophthalmic frames produced both in acetate and metal, the Moschino Teen collection from Allison is targeted to girls aged 9 to 12 in such colors as pink, red, blue, and navy. On the sun's front, temples boast the Moschino logo or the three-dimensional bow, and frames are made from rich laminated acetate plastic (Style No. MO62503 shown here). Designs for both include hearts, cat-eye shapes, bows, and the ophthalmics also are also available in polka dots. **For more information, contact Allison USA at 877-255-5757 or allison.it.** ▼



VCPN TOTALLYOPTICAL.COM

eyewear & sunwear

new product gallery

L'AMY SHOWS ITS VISION. Sporting a rectangular shape with wide temples, the new additions to L'AmY's Vision collection are both acetate designs with stylish details on the temples. Style No. 185 features spring hinges and a saddle bridge, and is available in brown/amber, cherry, and grape. Style No. 186 makes its mark with wide temples that are laminated with an abstract rose pattern; it comes in purple/ebony, cherry/ebony (shown here), and bubblegum/orange.

For more information, contact L'AmY America at 800-USA-LAMY or lamyamerica.com. ▼



FALL FOR FALL WITH WESCAN'S FYSH UK. Autumn colors dominate the palette of Fysh UK's new styles for fall 2011. With seven new releases, the deep hues include teals and purples and the designs keep both comfort and style at the forefront. Made with TR-90 temples, Style Nos. F-3449, F-3451, and F-3452 are lightweight and flexible, with options including full-rimmed, semi-rimless, and a relaxed cat eye that can accommodate progressive lenses. Style No. F-3450 is vintage-inspired, and comes in purple honeysuckle, aubergine mint, brown lemon, and teal coral. For more information, contact Wescan Optical at 800-361-6220 or fyshuk.com. ▼

