

JAN/18

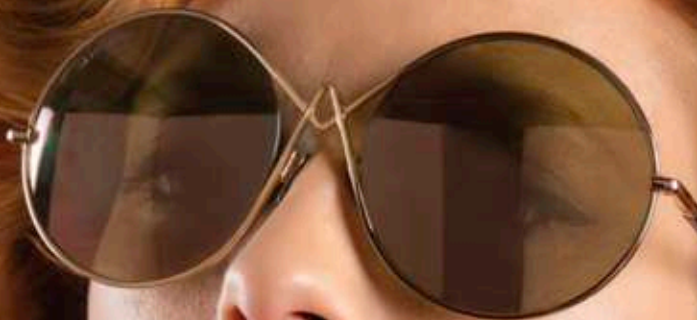
WWW.2020MAG.COM

CE
page 78

FACEBOOK.COM/
2020MAG

INSTAGRAM.COM/
2020MAG

20/20



Surprise...
SUNprize

EYEWEAR'S "DARK"
AND DESIRABLE
SENSATIONS

STYLEYEZING
GREAT LOOKING
LENSES

JOINING
THE SOCIETY OF THE
SPECTACLE



ENVY & IVORY

There's white... There's glacial white...
and then there's glacial/ivory white.
For that daring trend there's THIS.

FY5H UK 2028 from WestGroup

NEW
PRODUCTS



OUTSIDE the FRAME

For those of us already missing the warm weather, oversized jackets may be an answer to the problem. The GUESS Oversized Boucle Jacket is giving off some serious letterman jacket vibes. Not to mention the plush texture and cozy ribbed knit trim is sure to keep anyone comfortable and warm. -AH

GUESS Oversized Boucle Jacket
from nordstrom.com



BACK TO BLACK

20/20 INSIGHT: Even though frames are widely available in every color, black will always be irreplaceable. Classic, refined, traditional and bold—black frames can do it all. We've rounded up our pick of black optical frames that offer a sophisticated look anyone can pull off. Here's to one trend that will never go out of style.

-Jillian Urcelay



EVATIK 9157 WestGroupe

Crafted from Japanese titanium, this strong corrosion-resistant frame is hypoallergenic and lightweight, and also shows off refined details which include the colorblocked and ribbed patterned temples.

Pricing: \$\$\$\$
(855) 455-0042/westgroupe.com

BON VIVANT Isabelle Ogi Eyewear

Inspired by French architecture, this feminine CatEye frame is highlighted by its faceted peaks and glimmering acetate on the underside that shines through for a stylish and graceful look.



Pricing: \$\$\$
(888) 560-1060/ogieyewear.com

TLG NU025 L'AmY America

Featuring a compressed acetate front styled with titanium temples, this style introduces a new hinge design concept called the Fulcrum Tech Hinge which is non-mechanical and screwless for an ultra-lightweight and thin profile.



Pricing: \$\$\$
(800) 243-6350/lamyamerica.com

CALLAWAY Wild Rock ImageWear

Featuring titanium memory metal, this simple yet classic design for men offers adjustable nose pads, a traditional hinge and full rim front.



Pricing: \$\$\$
(800) 414-7656/imagewear.com

EXCES Princess 145 Eastern States Eyewear

Designed for women seeking a fashionable shape, this acetate frame with monel endpieces features pave highlights on the temples.



Pricing: \$\$
(800) 645-3710/eseyewear.com