

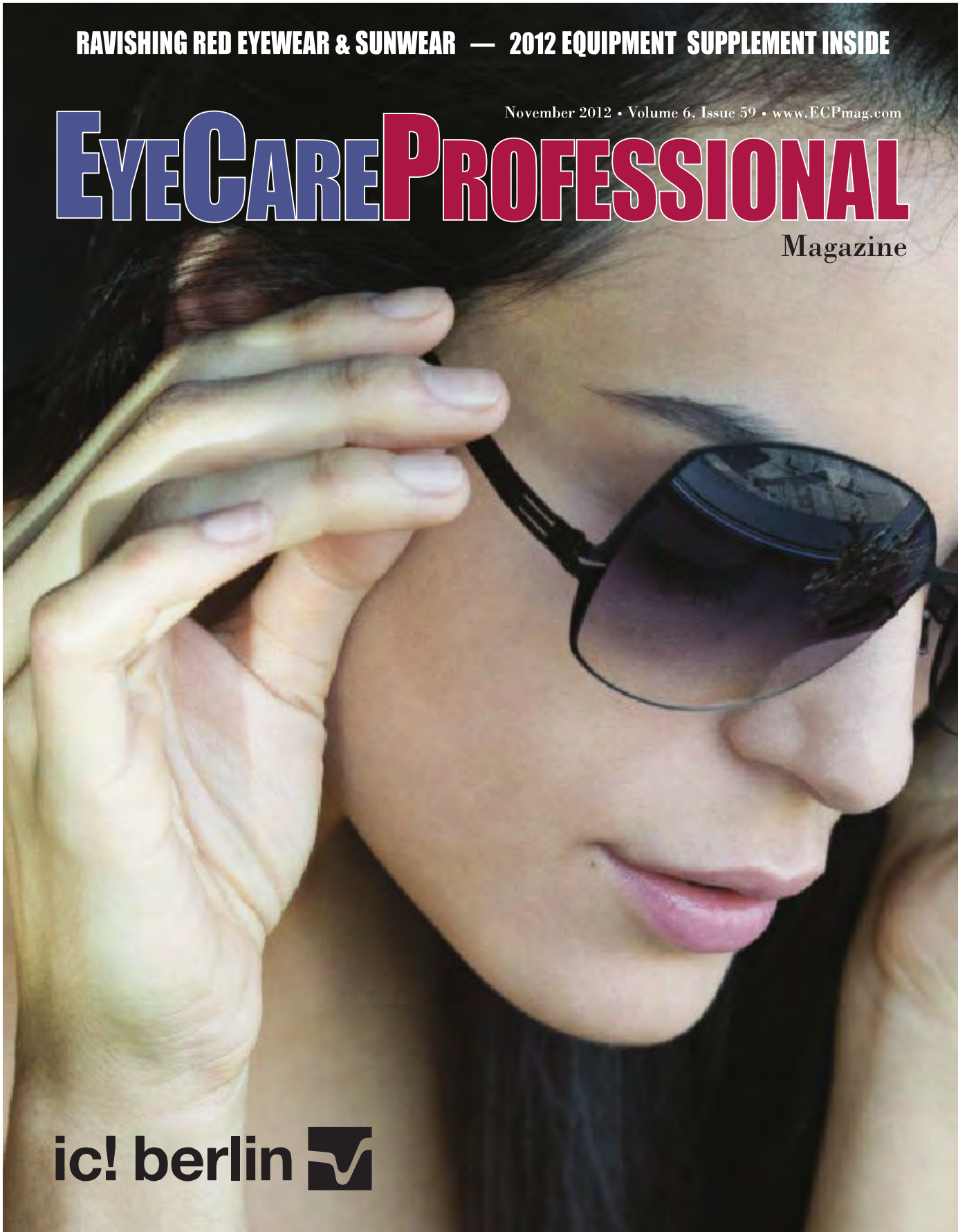
RAVISHING RED EYEWEAR & SUNWEAR — 2012 EQUIPMENT SUPPLEMENT INSIDE

November 2012 • Volume 6, Issue 59 • www.ECPmag.com

EYECARE PROFESSIONAL

Magazine

ic! berlin 





Ravishing REDS

1. LINDBERG

LINDBERG's successful fashion frame takes functionality, technology and fashion to new heights with its unique combinations of titanium and acetate. The color layers on the fronts interact beautifully with the clean look of the titanium temples. The new Acetanium products are inspired by the flared outer edges of 1950s eyewear. www.lindberg.com

2. adidas Eyewear from Silhouette

Featuring a contemporary, streamlined design, the Lite Fit collection is perfect for eyeglass wearers looking to express their passion for sports. Custom fit features like the adjustable nose area and Traction Grip™ ensure a perfect fit while Performance Steel™ inlay in the temples provides for easy adjustment if needed. www.adidas.com/eyewear



3. Alain Mikli

The A111140006 is a red acetate mixed with a Walnut brown color that just screams fall fashion. It's from our "Sassoun" collection, referencing a famous French children's book about a prince. Chiseled and cut with high precision, just like pieces of jewelry, these colorful frames are fit for the princesses of the 21st century. www.mikli.com



4. Kaenon

Hard Kore: The result of innovative materials and a "function first" focus, KORE™ is the ultimate performance sunglass. This fresh design is lightweight, incredibly durable and intuitively integrates with the natural form of the wearer's head shape while accommodating different facial features. www.kaenon.com



5. KLiik

KLiik 478 is a combination ladies model that highlights the many shades of red. From the rich burgundy of the stainless steel front, to the Bordeaux and tomato red shades found on the textured TR-90 temple. www.kliik.com



6. Monoqool by Studio Optyx

Monoqool's hottest color this season is Red. The NXT material is so lightweight it makes this frame only 4 grams in weight. www.monoqool.com