

JUN 16, 2011

Posted by Jenna in *optical, women's* |

Turn Heads in Kliik Cat-Eyes

Totally digging the cat-eye trend this season? So is Kliik by Wescan Optical. They've just introduced a new cat-eye optical frame, KL-443, that captures the retro vibe but with a fun spin on texture. Instead of using smoothed acetate, these specs are roughed up a bit to give them a grainy, wood-like appearance.

The woody finish and feminine shape certainly create quite a statement, making these frames downright irresistible. Furthermore, they're also available in a fresh palette of colors including black/yellow, taupe/blue and berry purple.




Kliik (KL443) by Wescan Optical

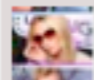
[Like](#) [Be the first of your friends to like this.](#)

[Tweet](#) [Share / Save](#) [Facebook](#) [Twitter](#) [Google+](#)

[Recent](#) [Popular](#) [Comments](#)

 **Spec-tastic Back to Scho...**
Posted by Kristie on Aug 12, 2011

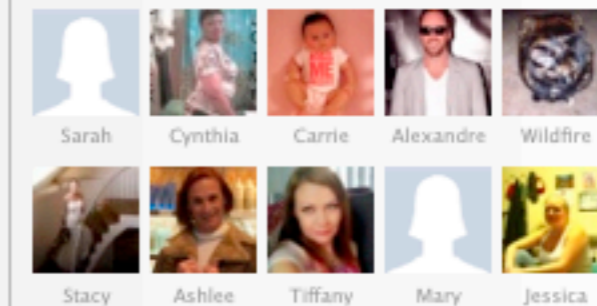
 **Find Urban Reinvention w...**
Posted by Jenna on Aug 11, 2011

 **Stars and Sunnies Collid...**
Posted by Kristie on Aug 10, 2011

 **Eyecessorize on Facebook**

[Like](#) You like this.

23,737 people like Eyecessorize.



[Facebook social plugin](#)

Search Eyecessorize

[Search](#)

Categories [Select Category](#)

Get Eyecessorize updates to your inbox: